

ANNUAL REPORT 2015



PINJARRA SENIOR

HIGH SCHOOL



Pinjarra Senior High School
Annual Report 2015

Introduction and Overview



It is with great pleasure I present the 2015 Annual Report for Pinjarra Senior High School to our school community.

The school acknowledges the great contribution Alan Hunt, Principal July 2012 to June 2015, has made to Pinjarra Senior High School achievements over this time. I am very proud to have taken

over from Mr Hunt in July 2015.

The purpose of the Annual Report is to serve as a record of the achievements of Pinjarra Senior High School. It also provides information about student performances, finances and priorities for that academic year. Finally, the report plays an integral role in the improvement and accountability cycle of the school as it reflects the reaction to new directions and initiatives as well as meeting the needs of the local community.

In April 2015, reviewers Ms Audrey Jackson, Mr Keith Newton and Ms Kerry Oliver conducted an independent review of the school; the purpose of which is to assure the Minister for Education, the Director General and the school community, that the College has met its commitments as outlined in its Delivery and Performance agreement and associated Business Plan. The major focus of the review was on:

- How well the school has implemented self-review.
- How well the school has improved student learning (achievement, progress and engagement) for all students.
- How well the school has created an environment that promotes learning and student wellbeing.
- How well the school is placed to sustain and improve its performance.

I have included the areas of strengths or commendations that were in the findings of the review along with the suggested 4 areas for development.

At Pinjarra Senior High School the curriculum is delivered through collaborative teams with distributed leadership working within a strong culture of collaboration and high expectations. Programs are offered which meet the needs and aspirations of the students and are enhanced through strong community partnerships. Through the student services team the school engages effectively with parents and care givers to create partnerships to improve educational outcomes for students.

The school leadership team and staff recognise that sustainability will be achieved through shared leadership, an emphasis on school-wide pedagogy and a stated ethos

and culture being embedded in all aspects of teaching, learning and leadership. The ACER review marked a turning point in the way that the school plans for and works toward improvement. The Strategic Plan 2014-17 is the outcome of the ACER review. It was evident during discussions that the leadership team and the staff share a commitment to the direction of the plan and its implementation; however, there is work to do in order to ensure its successful implementation. A greater focus on target setting and measurement of progress against targets will be critical. Evidence obtained from an analysis of the achievement of targets for student learning at both whole-of-cohort level and by specific sub-groups of students will guide the delivery of the plan and provide a basis for review.

Overall, Pinjarra Senior High School's governance processes, emergent management structures and development of whole-of-school plans and policies makes it well placed to undertake the next step in its drive to improve student performance.

The following areas for improvement are identified:

- Develop an operational plan linking the Strategic Plan to learning area plans as an integral part of the Strategic Plan; the Operational Plan should include defined targets for improvement, strategies to achieve these targets and a mechanism for data analysis and future target setting.
- State overt targets in the Operational Plan focusing on quantifiable achievement for both whole-of-cohort and specific sub-groups of students.
- Strengthen the linkages between the Senior Leadership, Head of Learning Area Managers and Year Coordinator teams to enhance the development and implementation of improvement strategies, including the gathering and exchange of data.
- Exercise due diligence in all planning and operational decisions including those relating to career advice and course changes affecting student capacity to meet School Curriculum and Standards Authority requirements.

All in all, it is my strong belief that Pinjarra Senior High School is well placed to further enhance its strong standing with the ongoing support of the school community. Whilst maintaining the school's strong tradition and culture, the school is capable of performing at a high level.

Rob Lawson
Principal

Introduction and Overview Con't

PINJARRA SHS SCHOOL BOARD

CHAIRPERSON REPORT 2015

Vicki Pollard
Pinjarra Senior High School
Board Chairperson



2015 Highlights

School / Student Achievement

- Our Year 12 students achieved 73 nationally recognised qualifications across all industry areas. 8 qualifications were at Certificate III level and 65 qualifications were at Certificate II level. There were 20 nationally recognised qualifications achieved by Year 11 students. 8 Year 10 students achieved their Certificate I in Creative Industries (Music).
- Daniel Elliott (Year 12) was the Alcoa/ Department of Education Dux of the school.
- Darcy Elms (Year 12) received an Australian Defence Award.
- Philip Mendonca was the Bendigo Bank/ Department of Education VET Dux of the school.
- Emma Moorfoot achieved an 'A' grade in Work Place Learning.
- Mikayla Brown, Denai Coombe and Cody Iles were presented with gift certificates for demonstrating the 'Chevron Way and Values' at the Chevron Camp.
- Sterling Winmar was unanimously identified to receive the AIME Ambassadors Award for 2015.
- Sterling Winmar, Bree Passmore and Nikita Ninyette were awarded Chevron-Aboriginal School-Based Student Scholarships for 2015.
- Harry Roman, Matthew Mitchell and Dean Baughen were invited back to Rylington Camp to attend a week long adult shearing school.
- Jacob Bolch, Tahlia Fletcher-Glentworth, Zachary Otto and Jaxon Vellacott were nominated to compete in the prestigious World Skills Automotive Competition. Jacob won a Bronze Medal for his efforts. Jacob was chosen to represent WA as part of the 2015 World Skills Training Squad.
- Sterling Winmar, Jason Harbour, Cameron Waller and Kade Pratt were nominated to

compete in the World Skills Engineering Competition. Sterling won a silver medal in this competition.

School Events

- Country Week was a highlight for 92 students who played with great spirit and determination and were a credit to the school and their families.
- 30 students were fortunate to attend our annual Year 10 Canberra Excursion.
- The Pinjarra Football Academy (PFA) continues to thrive and has three classes over Years 8 to 10. The boys attended camps in Melbourne and Busselton as well as competing against several Perth schools during the year.
- A comprehensive Year 6 to Year 7 transition and induction program, including a small schools and orientation day and a Year 7 camp in Term 1, enabled students from our numerous feeder primary schools to make a successful transition to high school.
- Powering Careers in Energy (Chevron). This highly successful senior school program provided students with the opportunity explore the resources sector. Within the course, students attended a 3 day camp and a mining and resources expo enabling them to understand industry opportunities available.
- Numerous camps and excursions in a wide range of subjects from Geography, English, Arts and Media, Music, Outdoor Recreation, Health and Physical Education etc, were completed providing a great range of educational and exciting opportunities for our students.
- The FLEEC program held a camp for its students at Rylington Park.
- Vikings won the Swimming Carnival this year.

2015 Highlights | Community Involvement

Community Involvement

- We have partnerships with, and support from: Chevron Australia, Alcoa Pinjarra, The Shire of Murray, The Bendigo Bank, CWISE (FLEEC Program), our School Board and all of the universities in Western Australia to varying degrees. Together with the many businesses locally and further afield who have supported our students in Workplace Learning, the school has provided a rich education for its students.
- Our partnership with Murdoch University enabled a number of our students to undertake the TLC110 (university preparation) Program giving them an alternative entrance into university.
- The school was able to access the Follow the Dream program and ATAS funding to actively support our indigenous students in their academic progress.
- Music and Dance students were regularly requested to perform in the community, providing opportunities to display their skills and talents.

- Pinjarra students' Art work was exhibited in the annual Peel Regional Art Show and the Pinjarra Rotary Art Exhibition. All exhibitions drew a high level of interest from visitors.
- Partnerships with State Training Providers (TAFEs) provided articulated pathways for students from auspice enrolments (on site) to Profile classes (off site).
- Group Training Organisations (i.e. South Metropolitan Youth Links SMYL) worked together to arrange School Based Traineeships for our students in a range of industry areas.

Community Involvement - Student Services

Our student services team liaised with and used the following community organisations to support our students and families in 2015:

- Youth Focus, Youth Connections, Reconnect, Peel Youth Services, Allambie, Relationships Australia, and CPFS (Department for Child Protection and Family Support).
- Ex-student Darcy Elms won Young Volunteer of the Year Award 2016 for his work in 2015.



Senior School Achievement

Summary of Results

- 71% of our students achieved the accepted attainment rate of a ATAR over 55 or a Cert II or higher by comparison to 43% in 2014.
- 82 Year 12 students were eligible to graduate. 93% achieved the WACE.
- One student was awarded a Certificate of Excellence by the School Curriculum and Standards Authority.

Student Attainment

The preparation of students to enter the work force, further training or University is the core business of schools. The measurement of the degree to which a school does this is shown in the Student Attainment rate. Attainment is achieved by students completing Year 12 with an ATAR equal or above 55 and/or achievement of a VET Certificate II or higher. 71% of our Year 12 students in 2013 achieved this.

Student Attainment Rate

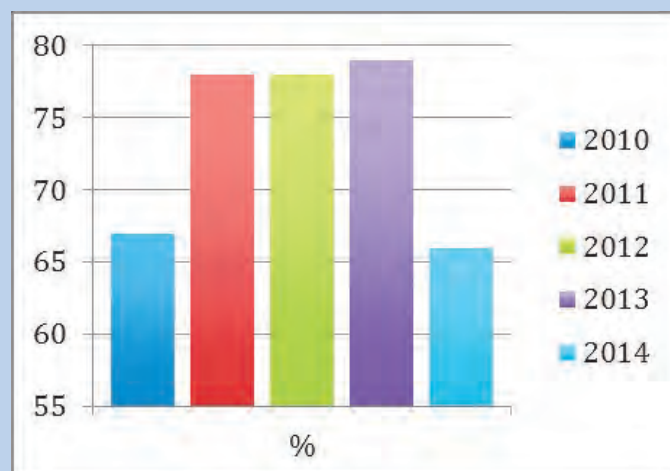
2011	2012	2013	2014	2015
64%	51%	72%	42%	71%

This is expected to return to historical levels of improvement we have been experiencing as the school size has grown of between 70% - 80%.

ATAR

The small number of students who completed an ATAR course makes many of the statistics skewed.

- Our students achieved a median ATAR of 66%.
- (See graph above)
- 1 student scored 75% or higher for at least one of their ATAR subjects, 33%
- 2 of our ATAR students applied for University entry. Both gained entry to their first preference course.
- 1 ATAR student elected not to apply to University but instead looked at studying writing at TAFE.



Vocational Education and Training

- In Year 12, 71% of VET students achieved a Cert II or higher compared to 56% in 2014. There were 61% of all students achieving a full qualification compared to 36% in 2014.

Full Qualification Achievement—Cert II or Higher

2011	2012	2013	2014	2015
38%	40%	55%	36%	61%



Senior School Achievement

Vocational Education and Training (VET)

Pinjarra Senior High School students have embraced the many VET opportunities on offer to them. As a result of changes to the Western Australian Certificate of Education (WACE), often referred to as 'Graduation', we now have Attainment as another focus for students leaving school. Both of these result in students receiving formal certification from the School Curriculum and Standards Authority (SCSA) in the form of a WACE Certificate or a Statement of Attainment. The vast majority of our Senior School students are enrolled in qualifications delivered on site in an auspicing arrangement with various State Training Providers (STPs) and Registered Training Organisations (RTOs) with a smaller group attending STPs off site. Having a wide range of partnerships enables us to cater to student needs in gaining nationally recognised qualifications in most industry areas.

Pinjarra Senior High School currently has training arrangements with the following RTOs and STPs:

- Challenger Institute of Technology
- Polytechnic West
- South Metropolitan Youth Links
- Central Institute of Technology
- Franklyn Scholar
- Collarts – Australian College of The Arts
- Skills Strategies International
- Australian YMCA Institute of Education and Training
- Royal Lifesaving Society of WA

Students across Years 10 to 12 access the many training programs on offer at PSHS.

56 Year 12 students, 19 Year 11 students and 8 Year 10 students were enrolled in a certificate course in 2015.

In 2015, 73 qualifications were achieved by Year 12 students:

- 8 of these were at a Certificate III level
- 65 of these were at a Certificate II level
- 16 Year 12s graduated with multiple qualifications

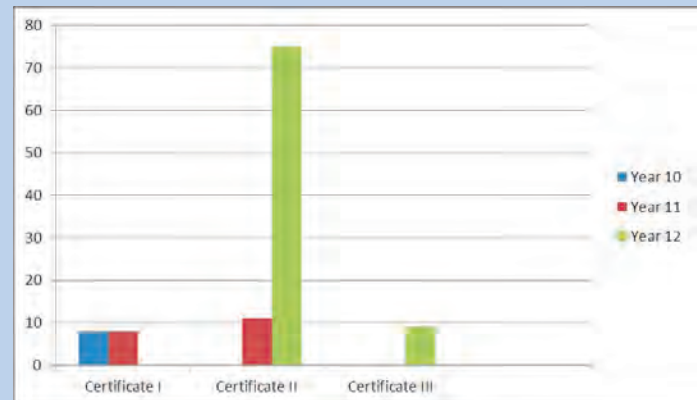
20 qualifications were achieved by Year 11 students:

- 11 Year 11s achieved a Certificate II
- 8 Year 11s achieved a Certificate I
- 1 Year 11 student achieved multiple certificates

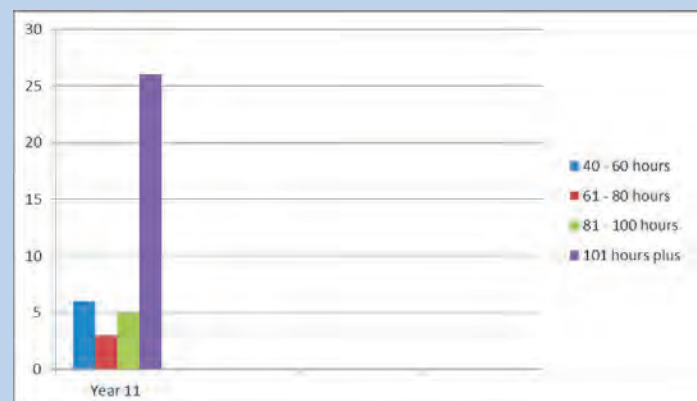
8 Year 10s achieved a Certificate II

Year 12 qualification combinations include certificates that the 2015 Year 12 cohort also achieved in 2014 as Year 11 students:

- 31 graduated with 1 qualification
- 23 graduated with 2 qualifications
- 1 graduated with 3 qualifications



2015 VET Qualifications (Total)



Year 11 ADWPL Achievement (Hours in workplace)

Senior School Achievement

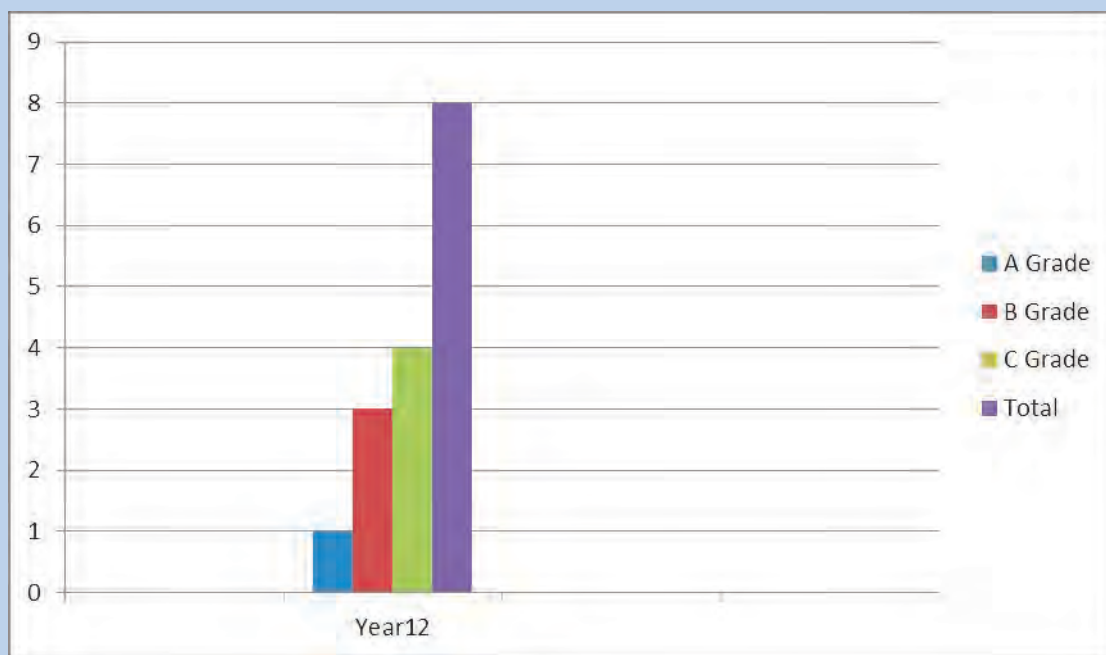
Workplace Learning (ADWPL)

The course, Workplace Learning was being phased out in 2015 with Year 12s only receiving a grade. Year 11s were enrolled in the 'new' Workplace Learning which is now an Endorsed Program and as such, students are not awarded a course grade but instead receive acknowledgement that they have achieved or not achieved in the program as well as acknowledgement of how many hours they attended the workplace.

In previous years, students had Directed Study time to catch up on work missed whilst they were in the workplace, however, in 2015 we did not offer that to students so the original number of 29 Year 12 WPL students dropped to 8 with students electing to stay at school in classroom based courses.

For the same reason there quite low numbers of students choosing ADWPL in Year 11 with 32 Year 11 students enrolled in the endorsed format of Workplace Learning

40 Year 11 and 12 students were enrolled in the various formats of WPL in 2015. The placement of these students is possible due to the generosity of the businesses in the local community. They take students into their busy workplaces and take the time to show the students what their industry is about. If it wasn't for their community spirit, our students would not be able to have this experience which is pivotal to their future pathways.



Year 12 WPL Grade Distribution

Lower School Achievement

2015 NAPLAN ENGLISH RESULTS—Year 7

	Reading	Writing	Grammar	Spelling
School's mean	508	470	498	500
WA school's mean	542	506	536	542
Australian School's mean	546	511	541	546

	Reading	Writing	Grammar	Spelling
Top 20% of Australian Schools	8%	7%	8%	6%
Middle 60% of Australian Schools	51%	55%	50%	58%
Bottom 20% of Australian Schools	41%	39%	42%	37%

National Minimum Standard	Reading	Writing	Grammar	Spelling
Above	63%	45%	66%	65%
At	31%	35%	17%	18%
Below	6%	20%	17%	17%

Progress Year 7 to year 9	Reading	Writing	Grammar	Spelling
Very high Progress				
High progress				
Moderate Progress				
Low progress				
Very low progress				



Lower School Achievement

2015 NAPLAN ENGLISH RESULTS—Year 9

	Reading	Writing	Grammar	Spelling
School's mean	555	519	544	542
WA school's mean	585	552	571	584
Australian School's mean	580	546	568	583

	Reading	Writing	Grammar	Spelling
Top 20% of Australian Schools	9%	9%	14%	7%
Middle 60% of Australian Schools	62%	69%	55%	58%
Bottom 20% of Australian Schools	29%	22%	31%	35%

National Minimum Standard	Reading	Writing	Grammar	Spelling
Above	65%	52%	52%	65%
At	24%	27%	32%	16%
Below	11%	22%	17%	19%

Progress Year 7 to year 9	Reading	Writing	Grammar	Spelling
Very high Progress				
High progress				
Moderate Progress				
Low progress				
Very low progress				



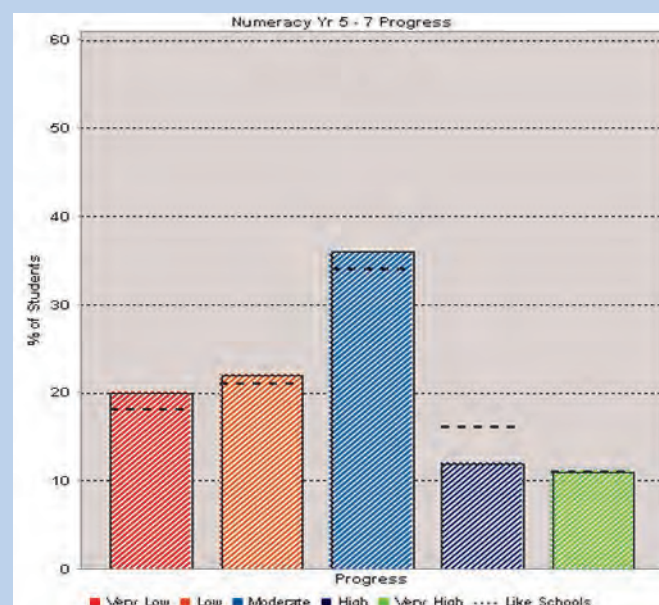
Lower School Achievement

2015 NAPLAN MATHEMATICS RESULTS—Year 7

Numeracy	
School's mean	500
WA school's mean	538
Australian School's mean	543

Numeracy	
Top 20% of Australian Schools	4%
Middle 60% of Australian Schools	54%
Bottom 20% of Australian Schools	42%

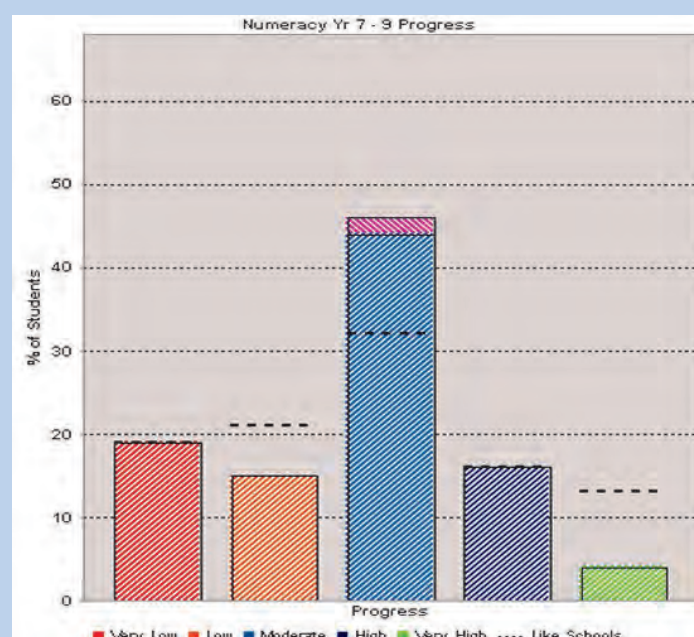
National Minimum Standard	Numeracy
Above	59%
At	37%
Below	4%



2015 NAPLAN MATHEMATICS RESULTS—Year 9

Numeracy	
School's mean	567
WA school's mean	596
Australian School's mean	592

Numeracy	
Top 20% of Australian Schools	7%
Middle 60% of Australian Schools	66%
Bottom 20% of Australian Schools	27%



Lower School Achievement

ENGLISH

Year 10 grade distribution from Year 8, 2013 to Year 10, 2015

	GRADE											
	NA		E		D		C		B		A	
	Count	%	Count	%	Count	%	Count	%	Count	%	Count	%
2015	1	0.7%	25	18%	19	13.7%	73	52.5%	15	10.8%	6	4.3%
2014	1	0.71	2	1.43	29	20.71	70	50	29	20.71	9	6.43
2013	12	8.8%	11	8.0%	20	14.6%	52	38.0%	32	23.4%	10	7.3%

Year 9 grade distribution from Year 8, 2014 to Year 9, 2015

	GRADE											
	NA		E		D		C		B		A	
	Count	%	Count	%	Count	%	Count	%	Count	%	Count	%
2015	3	2.3%	24	18.2%	31	23.5%	65	49.2%	8	6.1%	1	0.8%
2014	3	2.22%	13	9.63%	32	23.7%	65	48.15%	19	14.07%	3	2.22%

Year 8 grade distribution 2015

	GRADE											
	NA		E		D		C		B		A	
	Count	%	Count	%	Count	%	Count	%	Count	%	Count	%
2015	2	1.3%	26	16.6%	35	22.3%	60	38.2%	24	15.3%	10	6.4%

Year 7 grade distribution 2015

	GRADE											
	NA		E		D		C		B		A	
	Count	%	Count	%	Count	%	Count	%	Count	%	Count	%
2015	2	1.3%	26	16.6%	35	22.3%	60	38.2%	24	15.3%	10	6.4%



Lower School Achievement

MATHEMATICS

Year 10 grade distribution from Year 8, 2013 to Year 10, 2015

	GRADE											
	NA		E		D		C		B		A	
	Count	%	Count	%	Count	%	Count	%	Count	%	Count	%
2015	2	1.5	19	13.9	30	21.9 +1.9	57	41.6	17	12.4	12	8.8
2014	0	0	5	3.57	32	22.86	48	34.29	32	22.86	23	16.43
2013	10	7.3	8	5.8	27	19.7	30	21.9	38	27.7	24	17.5

	GRADE											
	NA		E		D		C		B		A	
	Count	%	Count	%	Count	%	Count	%	Count	%	Count	%
2015	4	3	18	13.6	21	15.9	28	21.2	35	26.5	26	19.7
2014	4	2.96	9	6.67	21	15.56	33	24.44	37	27.41	31	22.96

Year 9 grade distribution from Year 8, 2014 to Year 9, 2015

	GRADE											
	NA		E		D		C		B		A	
	Count	%	Count	%	Count	%	Count	%	Count	%	Count	%
2015	6	3.8	24	15.2	31	19.6	30	19	34	21.5	33	20.9

	GRADE											
	NA		E		D		C		B		A	
	Count	%	Count	%	Count	%	Count	%	Count	%	Count	%
2015	5	4.3	5	4.3	35	30.4	36	31.3	23	20	11	9.6



Lower School Achievement

HUMANITIES AND SOCIAL SCIENCES

Year 10 grade distribution from Year 8, 2013 to Year 10, 2015

	GRADE											
	NA		E		D		C		B		A	
	Count	%	Count	%	Count	%	Count	%	Count	%	Count	%
2015	1	0.7	24	15.9	23	15.2	48	31.8	37	24.4	18	11.9
2014	3	2.13	3	2.13	15	10.64	64	45.39	33	23.4	23	16.31
2013	7	5.1	9	6.6	20	14.6	51	37.2	37	27	13	9.5

Year 9 grade distribution from Year 8, 2014 to year 9, 2015

	GRADE											
	NA		E		D		C		B		A	
	Count	%	Count	%	Count	%	Count	%	Count	%	Count	%
2015	2	1.5	20	15.2	19	14.4	48	36.4	30	22.7	13	9.85
2014	31	22.96	9	6.67	22	16.3	41	30.37	23	127.04	9	6.67

Year 8 grade distribution 2015

	GRADE											
	NA		E		D		C		B		A	
	Count	%	Count	%	Count	%	Count	%	Count	%	Count	%
2015	1	0.6	26	16.4	23	14.5	53	33.3	29	18.2	27	17

Year 7 grade distribution 2015

	GRADE											
	NA		E		D		C		B		A	
	Count	%	Count	%	Count	%	Count	%	Count	%	Count	%
2015	2	1.7	10	8.6	17	14.7	34	29.3	37	31.9	16	13.8

Lower School Achievement

SCIENCE

Year 10 grade distribution from Year 8, 2013 to Year 10, 2015

	GRADE											
	NA		E		D		C		B		A	
	Count	%	Count	%	Count	%	Count	%	Count	%	Count	%
2015	2	1.3	22	14.5	23	5.1	53	34.9	39	25.7	13	8.6
2014	1	0.71	26	18.44	19	13.48	40	28.37	36	25.53	19	13.48
2013	6	4.4	8	5.8	13	9.5	68	49.6	34	24.8	8	5.8

Year 9 grade distribution from Year 8, 2014 to Year 9, 2015

	GRADE											
	NA		E		D		C		B		A	
	Count	%	Count	%	Count	%	Count	%	Count	%	Count	%
2014	1	0.8	9	6.8	23	17.4	52	39.4	30	22.7	17	12.9
2013	3	2.24	14	10.45	25	18.66	51	38.06	29	21.64	12	8.96

Year 8 grade distribution 2015

	GRADE											
	NA		E		D		C		B		A	
	Count	%	Count	%	Count	%	Count	%	Count	%	Count	%
2014	4	2.5	13	8.2	43	27	38	23.9	28	17.6	33	20.8

Year 7 grade distribution 2015

	GRADE											
	NA		E		D		C		B		A	
	Count	%	Count	%	Count	%	Count	%	Count	%	Count	%
2014	6	5.2	16	13.0	20	17.4	44	28.3	20	17.4	9	7.8

Attendance

Attendance by Percentage 2013—2015

	Attendance Rate	
	School	WA Public Schools
2013	85.8%	87.4%
2014	84.3%	86.9%
2015	85.1%	87.9%

Attendance % - Secondary Year Levels 2013-2015

	Attendance Rate					
	Y07	Y08	Y09	Y10	Y11	Y12
2013		88%	86%	86%	77%	91%
2014		87%	86%	83%	83%	81%
2015	89%	87%	84%	84%	83%	85%
WA Public Schools 2015	91%	89%	87%	85%	87%	89%



Year 12 Presentation Evening | Excellence Awards

School Board Canteen Service Award.....	Darcy Elms
Sportsman of the Year Award	Ky Anderson
Sportswoman of the Year Award	Kennedy Chalmers
Rotary/Caltex Best All Rounder Award	Michael Slayford
West Scheme/Shire of Murray Excellence in VET Award	Jordan Dunning
Lion's Endeavour and Citizenship Award	Makayla Philp
Galloway's Vocational Award	Darcy Elms
Youth Care School Service Award	William Hayes
Long Tan Teamwork and Leadership Award	Darcy Elms
Quiet Achiever	Sarah Heal
Highest Attendance.....	Nicholas Merritt
Certificate of Community Involvement.....	Mitchell Sweeney
Mandurah Muscateers Outstanding Achievement Scholarship.....	Marriana Chester
Curtin University Principal Recommendation Award.....	Rebekah Staer
ECU Personal Excellence Award	Sophie Holway
Murdoch's Aspiration & Pathways for University Academic Scholarship.....	Teela Carr
UWA Excellence Award.....	Daniel Elliott
Bendigo Bank/Department of Education Vocational Award	Philip Mendonca
Alcoa of Australia/Department of Education Dux of the School	Daniel Elliott

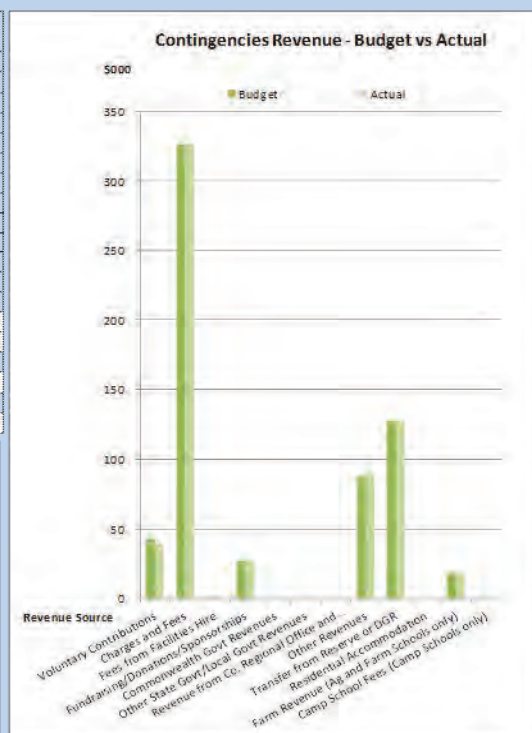
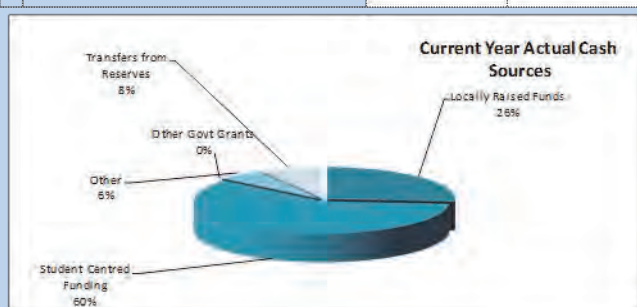


Year 12 Presentation Evening | Subject Awards

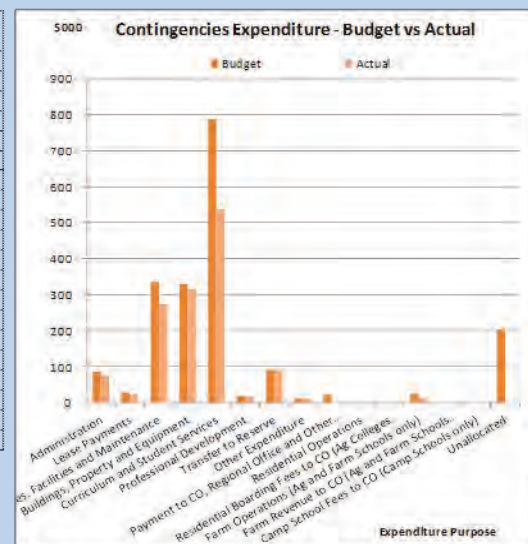
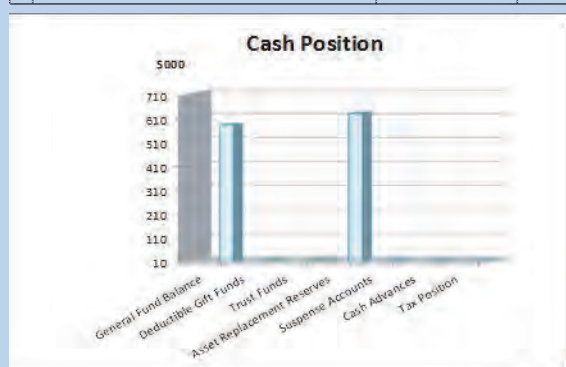
Certificate II in Music.....	Telina Jones
Certificate III in Music.....	Nicholas Heckingbottom
Media Production and Analysis 1C/D.....	Rachelle Bonser
Visual Art 1C/D.....	Kelly Fisher
Whole School Production—Dance.....	Denae Coombe
Whole School Production—Drama.....	Telina Jones
Certificate II in Automotive.....	Darcy Elms
Certificate II in Business.....	Telina Jones
Certificate II in Engineering.....	Darcy Elms
Design—Photography Stage 1.....	Kaitlynn Heller
Food Science Technology Stage 1.....	Natalie Reid / Carrie Gliddon
Materials, Design, Technology—Metals Stage 1.....	Thomas Back
Materials, Design, Technology—Wood Stage 1.....	Michael Robertson
English Stage 1A/B.....	Preston Hooton
English Stage 1C/D.....	Madolyn Burr
English Stage 2A/B.....	Rhianna Timson
English Stage 2C/D.....	Teela Carr
English Stage 3.....	Marriana Chester
English Literature Stage 1C/D.....	Shanique Sjogren
Certificate II in Sport Coaching.....	Brett Milward
Health Studies.....	Rhianna Timson
Certificate II in Outdoor Recreation.....	James Hanna
Career and Enterprise Stage 1.....	Natalie Reid / Carrie Gliddon
Geography Stage 3.....	Marriana Chester
Work Place Learning.....	Emmah Moorfoot
History Stage 3.....	Sophie Holway
Mathematics Stage 1C/D.....	Brodie Harnett
Mathematics Stage 1D/E.....	Thomas Back
Mathematics Stage 2A/B.....	Nicholas Heckingbottom
Mathematics Stage 2C/D.....	Telina Jones
Mathematics Stage 3A/B.....	Samual Lorraway
Mathematics Stage 3C/D.....	Daniel Elliott
Human Biological Sciences Stage 3.....	Rebekah Staer
Integrated Science Stage 1A/B.....	Jacob Newman
Integrated Science Stage 1C/D.....	Natalie Reid
Chemistry Stage 3.....	Daniel Elliott
Physics Stage 3.....	Daniel Elliott

Financial Summary 2015

	Revenue - Cash	Budget	Actual
1	Voluntary Contributions	\$ 43,002.00	\$ 39,066.05
2	Charges and Fees	\$ 325,859.00	\$ 326,902.22
3	Fees from Facilities Hire	\$ 118.00	\$ 118.18
4	Fundraising/Donations/Sponsorships	\$ 26,690.00	\$ 26,598.73
5	Commonwealth Govt Revenues	\$ -	\$ -
6	Other State Govt/Local Govt Revenues	\$ -	\$ -
7	Revenue from Co, Regional Office and Other Schools	\$ -	\$ -
8	Other Revenues	\$ 87,722.00	\$ 90,165.01
9	Transfer from Reserve or DGR	\$ 127,508.00	\$ 127,508.00
10	Residential Accommodation	\$ -	\$ -
11	Farm Revenue (Ag and Farm Schools only)	\$ 18,177.00	\$ 18,176.82
12	Camp School Fees (Camp Schools only)	\$ -	\$ -
	Total Locally Raised Funds	\$ 629,076.00	\$ 628,530.01
	Opening Balance	\$ 374,059.33	\$ 374,059.33
	Student Centred Funding	\$ 936,277.00	\$ 936,301.89
	Total Cash Funds Available	\$ 1,939,452.00	\$ 1,937,931.23
	Total Salary Allocation	\$ -	\$ -
	Total Funds Available	\$ 1,939,452.00	\$ 1,937,931.23



	Budget	Actual
1 Administration	\$ 86,273.83	\$ 74,206.59
2 Lease Payments	\$ 28,000.00	\$ 22,888.34
3 Utilities, Facilities and Maintenance	\$ 334,327.29	\$ 275,028.61
4 Buildings, Property and Equipment	\$ 330,052.82	\$ 317,059.78
5 Curriculum and Student Services	\$ 787,736.25	\$ 538,300.07
6 Professional Development	\$ 20,300.00	\$ 16,479.46
7 Transfer to Reserve	\$ 92,500.00	\$ 92,500.00
8 Other Expenditure	\$ 10,927.00	\$ 10,928.99
9 Payment to CO, Regional Office and Other Schools	\$ 22,000.00	\$ -
10 Residential Operations	\$ -	\$ -
11 Residential Boarding Fees to CO (Ag Colleges only)	\$ -	\$ -
12 Farm Operations (Ag and Farm Schools only)	\$ 23,938.80	\$ 12,614.27
13 Farm Revenue to CO (Ag and Farm Schools only)	\$ -	\$ -
14 Camp School Fees to CO (Camp Schools only)	\$ -	\$ -
15 Unallocated	\$ 202,367.36	\$ -
Total Goods and Services Expenditure	\$ 1,938,452.35	\$ 1,360,001.11
Total Forecast Salary Expenditure	\$ -	\$ -
Total Expenditure	\$ 1,938,452.35	\$ 1,360,001.11



Cash Position as at:	
Bank Balance	\$ 1,181,889.41
Made up of:	\$ -
1 General Fund Balance	\$ 577,990.12
2 Deductible Gift Funds	\$ -
3 Trust Funds	\$ -
4 Asset Replacement Reserves	\$ 626,753.45
5 Suspense Accounts	\$ 12,442.16
6 Cash Advances	\$ 350.00
7 Tax Position	\$ 10,002.00
Total Bank Balance	\$ 1,181,889.41



Pinjarra Senior High School
16 McLarty Road, Pinjarra WA 6208
PO Box 353

T. 9531 7000
F. 9531 1991
E. Pinjarra.SHS@education.wa.edu.au
W. www.pinjarraSHS.wa.edu.au

